

MIL-STD-1553B Data Bus Systems & Components

Connectorized Box Coupler System



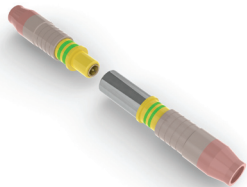
Demateable Bus Terminator ~78Ω: Threaded or Bayonet and sealed.



Box Couplers: 1 – 10 Stubs with customer designated connectors – threaded or bayonet (3 lugs – bus; 4 lugs – stub)



Discrete Connectors: Threaded or Bayonet to connect the stub to the "black box" or to connect the stub or bus to the box coupler.



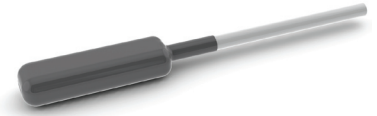
Mil-DTL-38999 Size 8 Cavity Triaxial Contacts: Equivalent to the Radiall EPX® and Raychem D-602 and DK-602 Contacts.



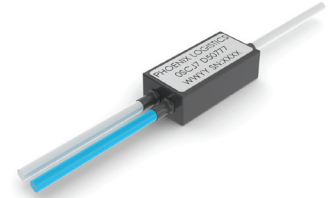
Demateable Stub Terminator: 3000Ω load to simulate a Stub Termination. Threaded or Bayonet. Useful for future upgrade or expansion of the system.

Data Bus Cable: PLI manufactures cable equivalent to the requirements of the USAF spec 8421526 and 8421527 and equivalent to the Raychem 10612 and 10613 data bus cables. We also utilize a number of other manufacturer's data bus cables when called for. The most common is Mil-C-17/176-00002.

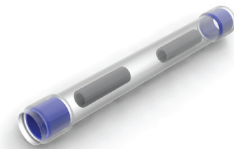
In-Line Coupler System



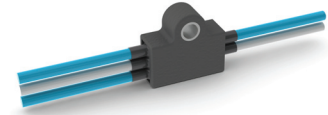
In-Line Bus Terminator ~ 78Ω: lightweight; integrated into the harness or spliced in.



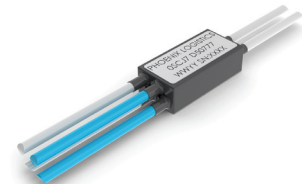
In-Line Lightweight Standard Single Stub Coupler: Available in numerous configurations; Internal terminations; Micro-miniature sizes. Can be built as a part of an integrated harness with or without connectors or spliced into the system.



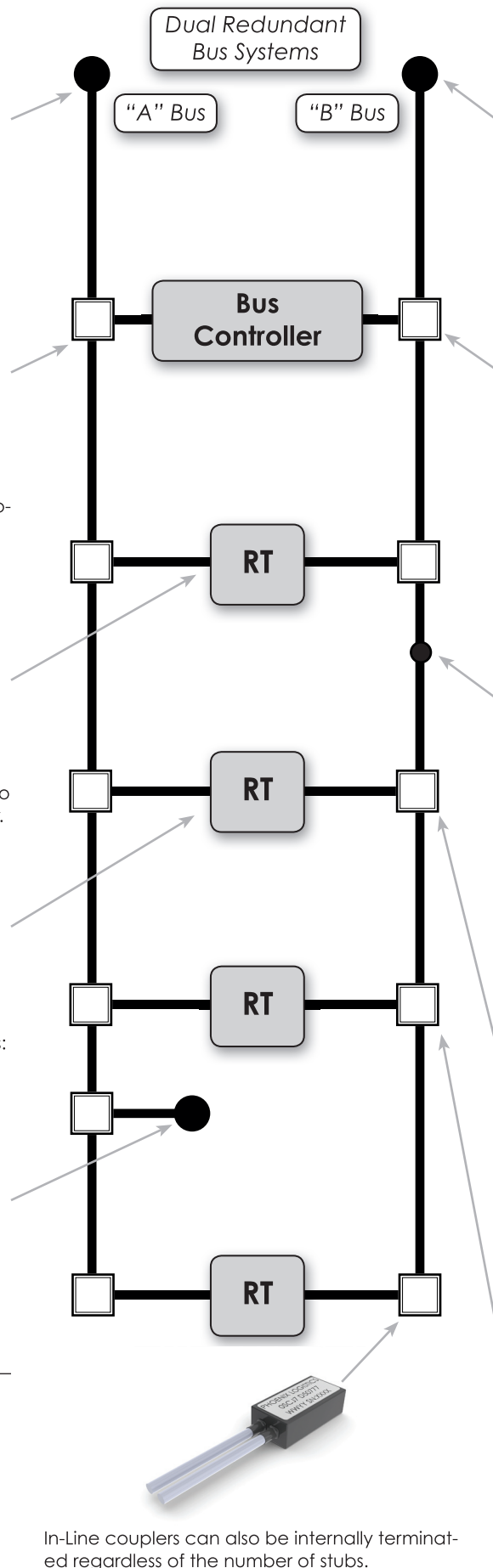
Extra-Flexible Splice Kit: Used for splicing Data Bus Cable together for repair, modification, or creation of a data bus transmission system. Kits accommodate several gauges of cable. They feature sealing dams to ensure moisture resistance and are fluid/fuel resistant. The kits are designed to be easily applied in the field.



Unique couplers: configurations available with multiple stubs with or without mounting eyelets. Custom configurations can be created.



In-Line multiple stub couplers: PLI data bus couplers may be configured with a variety of cables (single or double-shielded; in 22 or 24 AWG). These couplers are all lightweight and can easily be integrated into aircraft harnesses. They are available connectorized or with flying leads.



In-Line couplers can also be internally terminated regardless of the number of stubs.